

V6R2010x Comprehensive Installation Guide



This document has detailed instructions on how to load, register, and administer all products available on the 3DVIA Composer V6R2010x DVDs.

Before loading any software you should always log in with full administrative permissions and disable your antivirus and anti spyware programs.

The installation process has a Java component be sure your operating system has been updated (Windows XP Sp2 and latest windows updates from update.microsoft.com using the "customize" option rather than express.) recently to avoid any compatibility issues with the installer.

This is not a troubleshooting guide if you have any technical issues with 3DVIA Composer please contact a support technician through our eSupport website at <http://www.hawksupport.com> or call us in the U.S. at 1-877-266-4469 Canadian customers dial 866-587-6803

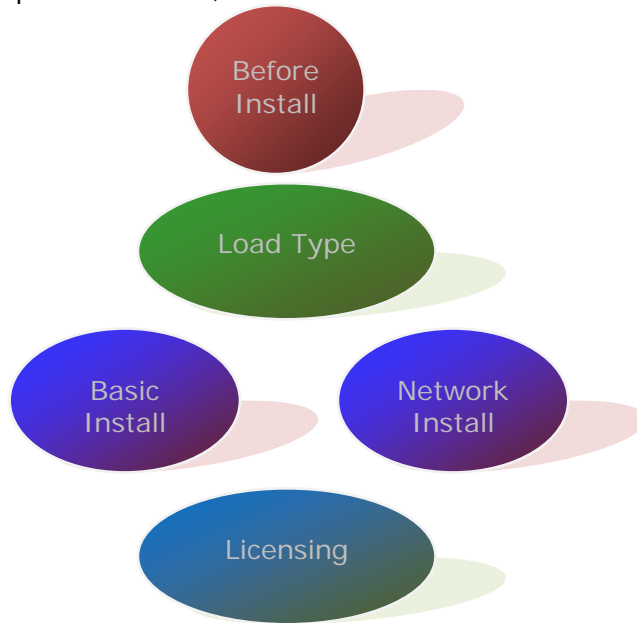
This document is only to be distributed and used by Hawk Ridge System customers any other use is prohibited.

©2009 Hawk Ridge Systems

Headquarters: 5707 Redwood Rd., Suite 18, Oakland, CA 94619
USA: 1-877-266-4469 www.hawkridgesys.com CANADA: 1-866-587-6803

Mountain View, CA - Rohnert Park, CA - Irvine, CA - Ventura, CA - Carson, CA - Woodland Hills, CA
Portland, OR - Bothell, WA - Las Vegas, NV - Reno, NV - Richmond, BC

Work from the top of tree down, click the links to learn about the procedures for:



Use the [Flow Chart](#) Bookmark within this document to return to this page

Contents

Before Installation	3
Basic Installation	4
Licensing	8
3DVIA Composer Network	10
HostID	11
License Manager Setup	12
Client Install	15
AppendixA	17
A: Disabling Antivirus	17

Before Installation

Hawk Ridge highly recommends taking a moment before installing 3DVIA Composer and check that you are ready to load your new software. Follow these steps to have a better performance within 3DVIA Composer:

1 - Check hardware compatibility

<i>Minimal Configuration</i>		<i>Recommended Configuration</i>	
Processor	Intel PIII 500MHz	Processor	Intel PIV 2GHz
Ram	128MB	Ram	2GB
3D chipset on graphic board (NVIDIA is highly recommended)			

- **Install latest graphic card driver.**
- **Recommended resolution: 1280X1024**

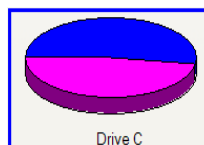
2 - Check Operating System Compatibility

	V6R2010x	
	3DVIA Composer 32-bit products	3DVIA Composer 64-bit products
XP 32	YES	N/A
XP 64	YES (WOW)	YES
Vista 32	YES	N/A
Vista 64	YES (WOW)	YES
2000	NO	N/A
NT	NO	N/A
Windows Server 2003 - 32	YES	N/A
Windows Server 2003 - 64	YES (WOW)	YES
Windows Server 2008 - 32	YES	N/A
Windows Server 2008 - 64	YES (WOW)	YES
Windows 7 - 32	YES	N/A
Windows 7 - 64	YES (WOW)	YES

- **Install latest Windows updates**

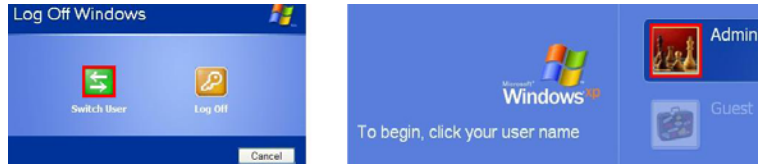
3 - Check hard drive for space and overhead

- **In the Windows Explorer go to My Computer and check drive (by default the C drive, right click this drive and choose "Properties") to see it has the 3 GB free required for the full program (with SolidWorks Importer).**
- **Also be sure this drive has at least 10% free space, a full disk may cause out-of-memory crashes.**



Basic Installation

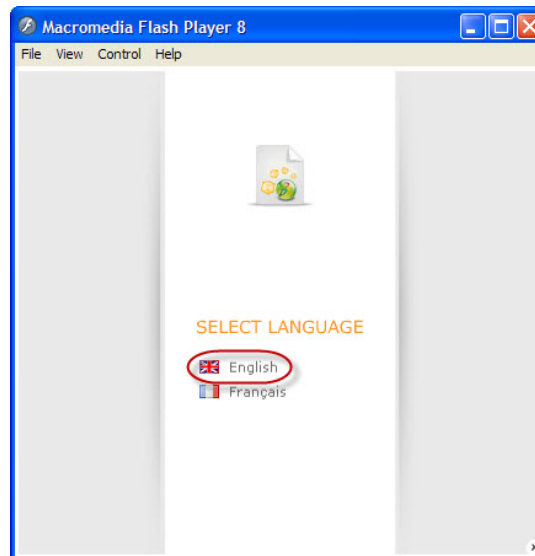
1. Log into the computer with full administrative rights.



2. Disable all Anti-Virus and Anti-Spy-ware tools. (See [Appendix A](#) if unsure how to disable these tools)

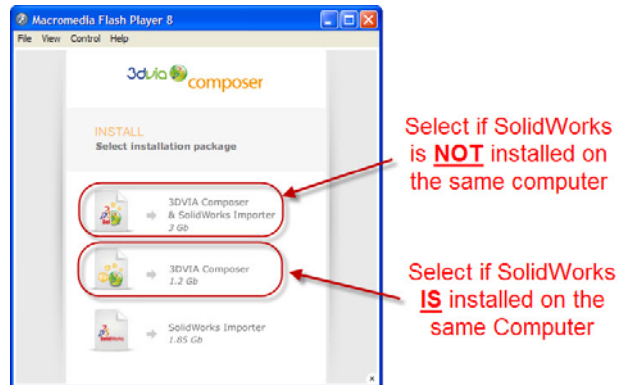


3. Insert DVD into your computer. DVD #1 is for 32 bit XP, Vista, and 7. DVD #2 is for 64 bit XP, Vista and 7.
4. The installer should start automatically. If it does not, explore to the CD-DVD ROM drive and double-click on Icon, or right click and choose autoplay.
5. The first window will ask you what language you want to install, select **English**.

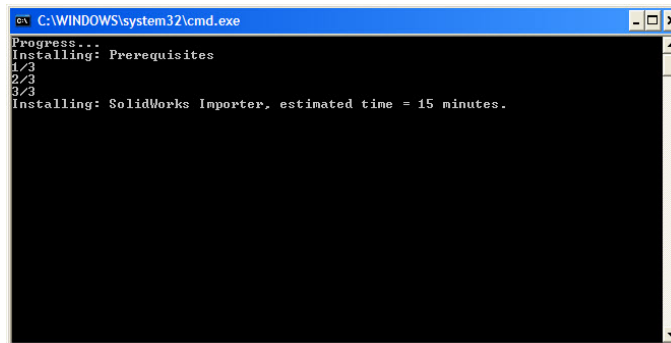


3DVIA Composer Install Manual

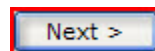
6. The next window will give you three selections. The first selection is to install '3DVIA Composer & SolidWorks Importer'. You will want this option if you do not have SolidWorks installed on the same computer as you are installing 3DVIA Composer. This will allow you to import native SolidWorks files. If you have SolidWorks installed on the same computer than select the second option '3DVIA Composer'. By Selecting the second option 3DVIA Composer will use the currently install version of SolidWorks to import native SolidWorks files. At any point you can install the SolidWorks Importer using the last option.



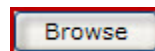
7. If you selected the second option of just installing 3DVIA Composer please continue to the next step. Selecting the '3DVIA Composer & SolidWorks Importer' will show a series of command windows. The SolidWorks importer requires some prerequisites including; Visual C++ 2005 Redistributable, .NET Framework 3.0 and VSTA. The SolidWorks importer will install next. This usually takes around 15 minutes. You will not see any progress, please be patient and allow time for the complete installation.



8. Exit all other Windows programs and click the "Next" button to continue.

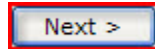


9. If you wish to modify the name or location of the installation folder press the "Browse" button and browse to a desired location.

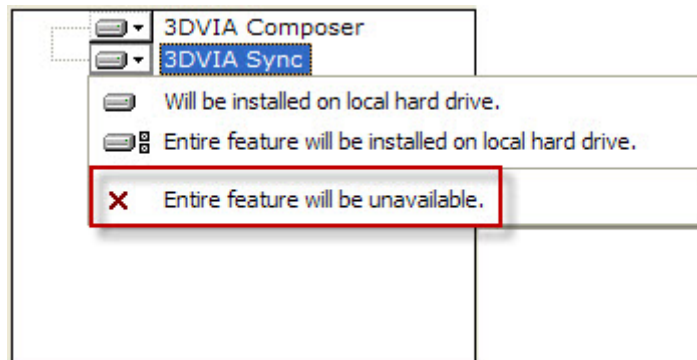


3DVIA Composer Install Manual

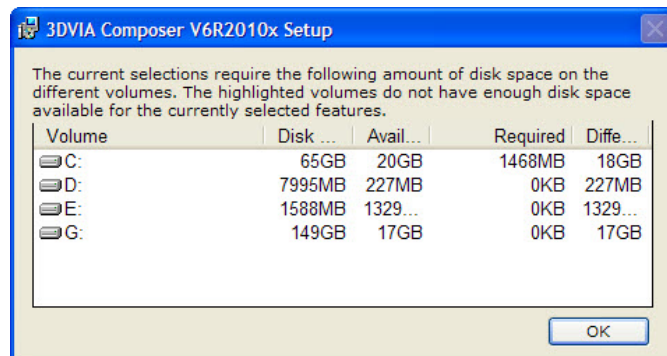
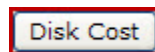
10. Click the **“Next”** button to continue.



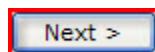
11. It is recommended to install all features. If you did not purchase Sync you have the option to not to install Sync. Click the down arrow and select **“Entire feature will be unavailable”** if you do not want Sync installed.



12. The 3DVIA Composer install requires 1.2 GB of storage. Click the **“Disk Cost”** button if you are unsure of the available space. Click the **“OK”** button to continue.

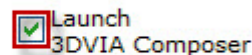


13. Click the **“Next”** button to continue.



14. Leave the check box selected to **“Launch 3DVIA Composer”** after the install. Otherwise, deselect the check box.

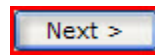
Click this option to launch 3DVIA Composer once installation is complete. The first launch of 3DVIA Composer will require administrative access to your system.



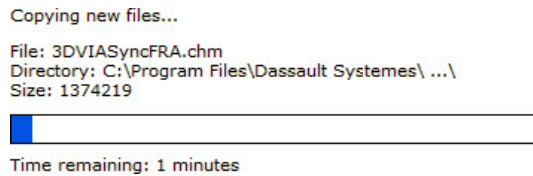
15. The 3DVIA Composer V6R2010x language selection window will appear, select **English**.



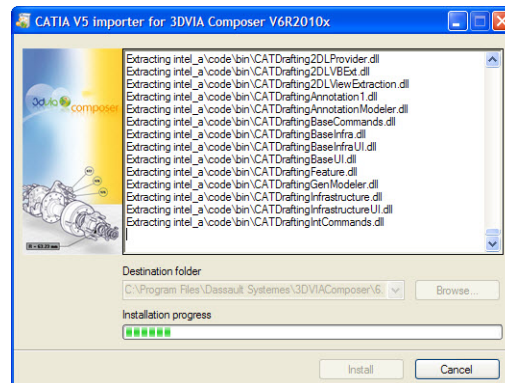
16. Click the “**Next**” button to install.



17. Now 3DVIA Composer will begin to install.



18. After 3DVIA Composer installs the CATIA importer will be installed.



19. Click “**Finish**” to complete the install.

Now the software is loaded on the system to use the product you will need to start it, and license it. See the instructions in the [Licensing](#) section to complete this task.

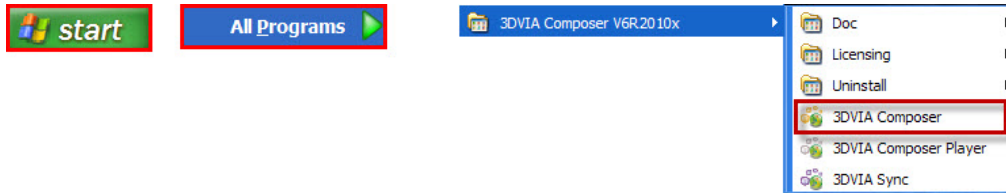


Licensing

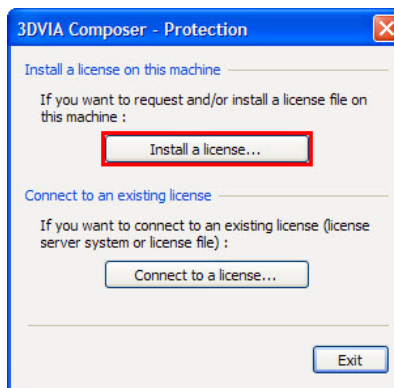
After loading the software you will want to start it to make sure it runs correctly. If you have a stand alone seat of 3DVIA Composer you must have a license file for the software specific to the computer's physical address. If you have a floating license, see the [Network Installation](#) section of this document to start it correctly.

When you first start 3DVIA Composer it will ask for you to License the product.

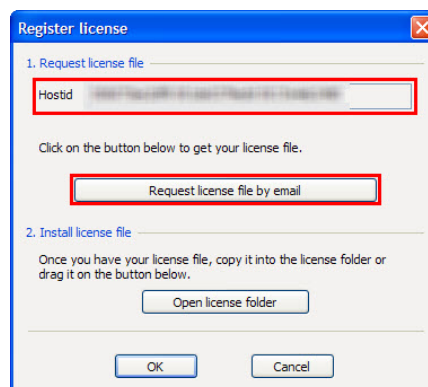
1. Go to **Start, All Programs, 3DVIA Composer V6R2010x, 3DVIA Composer**



2. When 3DVIA Composer starts the "Protection" window will appear. Choose "**Install a license...**" radio button.



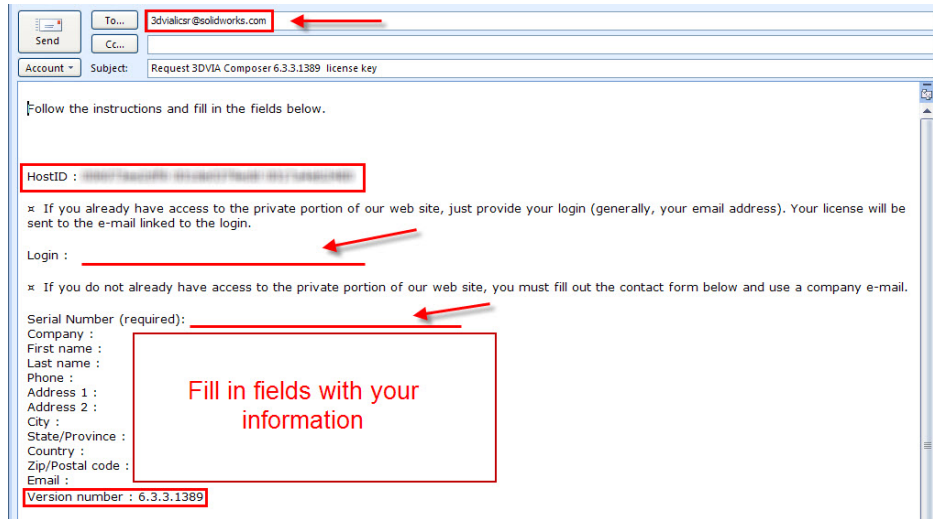
3. Next, you will see the "Register License" window. You will need to obtain a license file. Select the "**Request license file by email**" radio button. Above the radio button, your Hostid address will be filled be displayed. This should be automatically populated in the email.





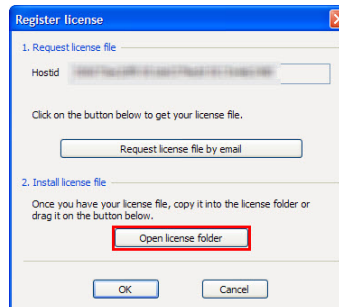
3DVIA Composer Install Manual

- An email will be automatically generated to 3dvialicsr@solidworks.com. The "HostID" field and the "Version number" will be automatically generated. In the "Login" field use your **SolidWorks Customer Portal login ID** if you have one. Otherwise leave this field blank. Your 3DVIA Composer serial number was sent to you in your order confirmation email sent by Hawk Ridge Systems. Fill out the "Serial Number" field with your serial number. Fill in the rest of the fields with your information and send the email.

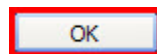


It may take up to 24 hours for SolidWorks to process this email and respond with your license file.

- SolidWorks will send a return email with a *.lic file attached. Press the "Open license folder" radio button and place this *.lic file in folder that opened in Windows Explorer. You may also simply drag and drop the *.lic file onto the "Open license folder" radio button.



- Press the "OK" button to complete the licensing of your 3DVIA Composer.



Your 3DVIA Composer is now properly licensed.



3DVIA Composer Network



A NetWork Installation allows a company to have more seats of 3DVIA Composer loaded than they own licenses for. The licenses are metered out by a server computer to make sure that only the amount of licenses purchased are running at any given time.

This is useful if you have people who are not full time users they can have 3DVIA Composer loaded on their machines without taking away an entire license. They will only be using a license if the server has any available.

If there are no licenses left to administer the next user to try to login to 3DVIA Composer will get a dialog box telling them that all licenses are currently in use.

The steps for loading a network license are in order below.

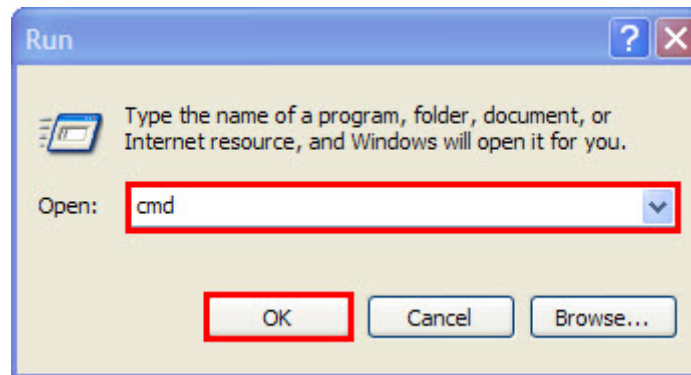
- ***Host ID - Getting a licenses file from SolidWorks***
- ***License Manager Setup - Install the Flex LM license manager.***
- ***Client Install - Installing seats of 3DVIA Composer that use the license manager.***

HostID

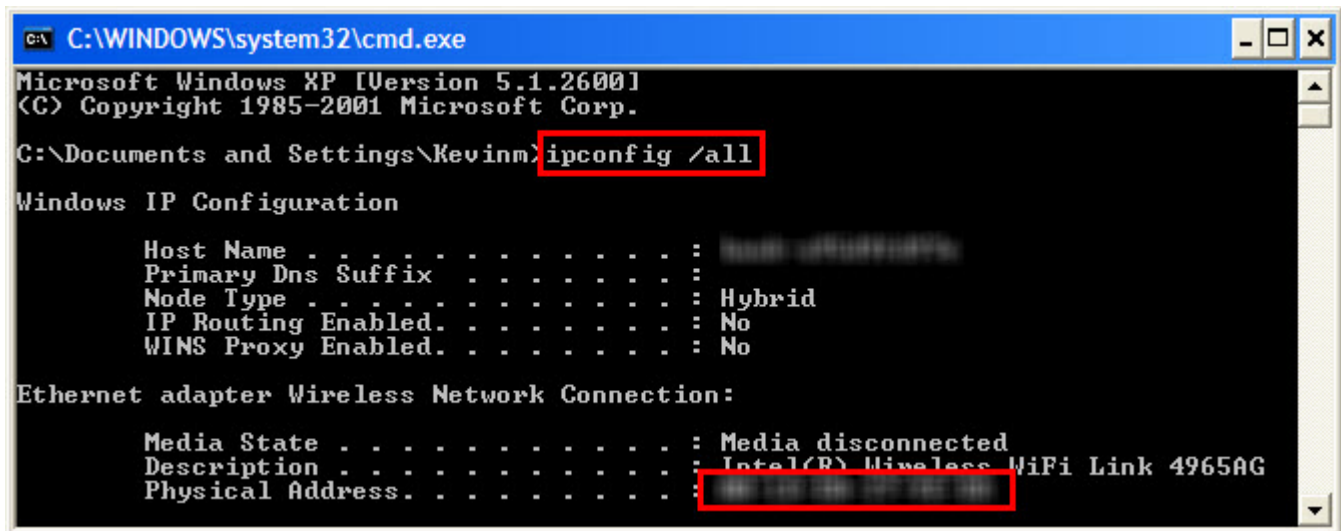
1. You must obtain the HostID (physical address/MAC address) from the server.
2. Go to **Start, Run**.



3. In the "Run" window type "**cmd**" to lunch a command window.



4. In the command window type "**ipconfig /all**" and press the **Enter** key. Under your "Ethernet adapter Local Area Connection" your "**Physical Address**" will be displayed. This will be a 12 digit alpha numeric number. This number will be used as the "HostID" to request a license file.



```
C:\WINDOWS\system32\cmd.exe
Microsoft Windows XP [Version 5.1.2600]
(C) Copyright 1985-2001 Microsoft Corp.

C:\Documents and Settings\Kevinm>ipconfig /all

Windows IP Configuration

Host Name . . . . . : 
Primary Dns Suffix . . . . . : 
Node Type . . . . . : Hybrid
IP Routing Enabled. . . . . : No
WINS Proxy Enabled. . . . . : No

Ethernet adapter Wireless Network Connection:

Media State . . . . . : Media disconnected
Description . . . . . : Intel(R) Wireless WiFi Link 4965AG
Physical Address. . . . . : 
```

After obtaining the server HOSTID follow steps 1 through 4 in [Licensing](#) on a client machine to request a license file. Replace the automatically generated HOSTID of the client machine with the server HOSTID that was just obtained. If you have any issues obtaining a license file please email us at support@hawkridgesys.com.

License Manager Setup

Platforms supported to date by 3DVIA Composer License manager are listed below:

- Microsoft Windows XP
- Microsoft Windows Server 2003
- Sun Solaris 7
- Sun Solaris 8

Dassault Systèmes is able to provide, on request, a version of its license manager for all the platforms and operating systems supported by FLEXIm.

YOU CANNOT INSTALL THE NETWORK LICENSE MANAGER ON TO YOUR SERVER FROM A REMOTE DESKTOP.

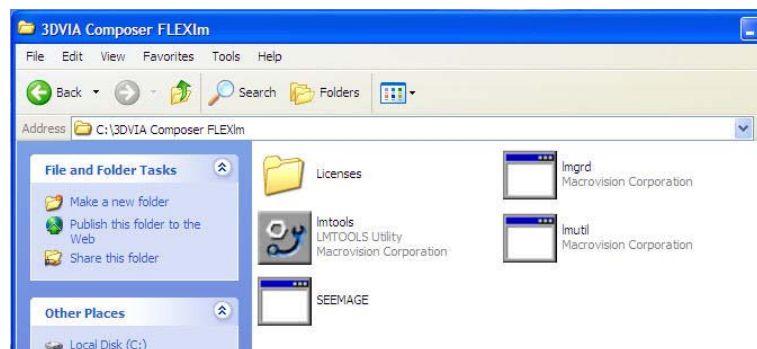
1. Log into the server with administrative rights.



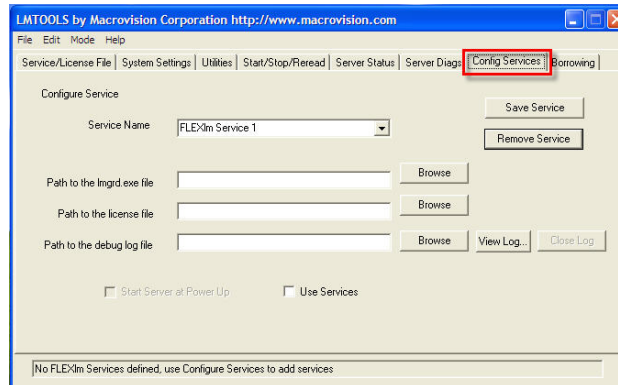
2. Disable all Anti-Virus, Anti-Spyware and Windows Defender if running Vista (If you are not sure how to do this please see [Appendix A](#) in this document)



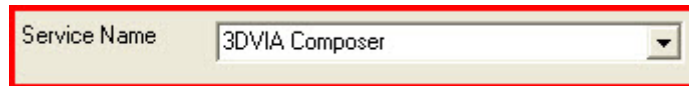
3. After obtaining your network license file, download the 3DVIA Composer License Manager files by clicking [here](#).
4. On the server PC that will be hosting the licenses, extract the downloaded files to a location of your choosing; for example: "C:\3DVIA Composer FLEXIm".
5. Place your 3DVIA Composer license file in the same directory as the license manager files, or in a separate folder in this directory.



6. Launch LMTOOLS within the directory from step 5, and go to the **“Config Services”** tab



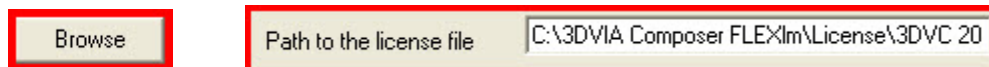
7. In the **“Service Name”** field, type a name of your choosing for the Composer license service; for example, **“3DVIA Composer”**



8. In the **“Path to the Imgrd.exe file”** box, browse to the location of Imgrd.exe from step 7



9. In the **“Path to the license file”** box, browse to the location of your license file (.lic) from step 7



10. In the **“Path to the debug log file”** box, browse to a location where you would like the server log to be created and enter a name for the log (for example, C:\3DVIA Composer FLEXIm\Imgrd.log)



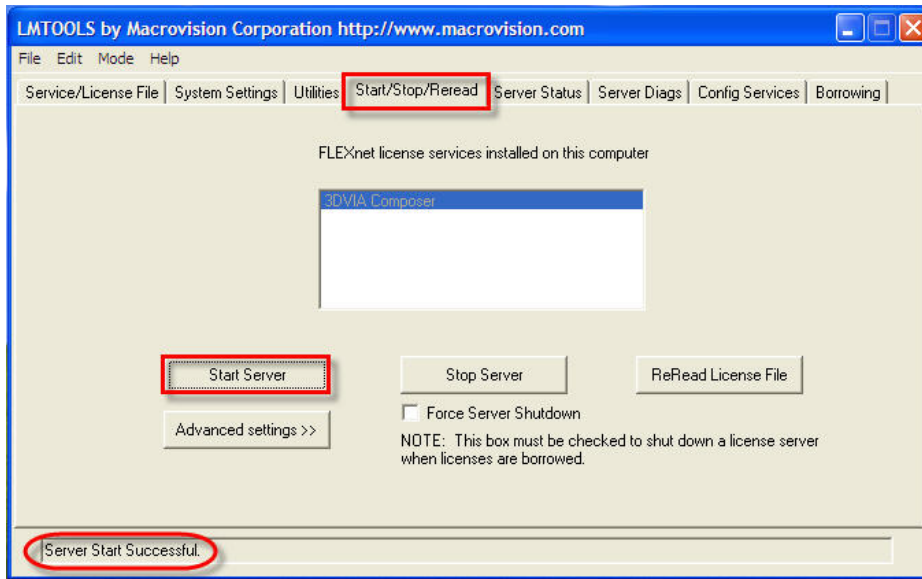
11. Click the **“Save Service”** button



12. Check the **“Start Server at Power Up”** and **“Use Services”** checkboxes



13. Go to the “**Start/Stop/Reread**” tab and click the “**Start Server**” button. Make sure that “**Server Start Successful**” appears in the status bar.



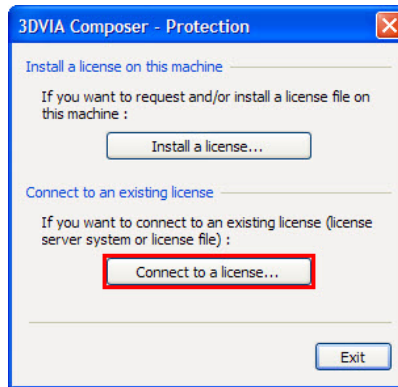
Now that we have the server updated you can now install the individual client machines. Go to the physical client computer begin the installation.

Return to  FLOW CHART

Client Install

The client installation is the same as a Basic Install of 3DVIA Composer follow the instructions in [Basic Installation](#) section to load the software when it comes time for the licensing follow these steps.

1. When 3DVIA Composer starts the “Protection” window will appear. Choose “**Install a license...**” radio button.



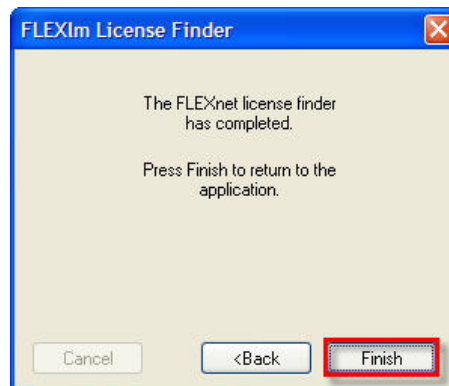
2. Select the “**Specify the License Server System**” radio button and press “**Next**”.



3. Enter the **server’s full name** and press the “**Next**” button.



4. Press the “**Finish**” button.



Composer should now be up and running on the client(s).



Appendix A

A: Disabling Antivirus

Though 3DVIA Composer can load with some anti-virus programs loaded the version and type can vary so we recommend turning all anti-virus and spyware programs off when installing 3DVIA Composer to ensure none of the components of the program are blocked or corrupted.

If you have an IT department at your company please check with them to make sure you are turning off the program with their authorization and that there is not a network level anti-virus on as well.

There are many anti-virus and spy ware programs available here is a instructions for disabling many of the more common types.

If you are using a network you should check with your IT department to see if there are any additional protection programs running from your network server.

Windows XP, users, perform the following steps (if you are running Vista please see the instructions on disabling Windows Defender at the end of this section:

Disable Norton AntiVirus Service by:

1. Click **Start > Settings > Control Panel**.
2. Double-click **Administrative Tools**.
3. Double-click the **Services** icon.
4. Search the list of services to find *Symantec SPBBC SVC*.
5. Double-click this service to open.
6. Set the **Startup type** to *Disable*.
7. Click **OK** to close the service Properties dialog box.
8. Close the remaining dialogs.
9. Reboot computer.

Everyone must do the following steps:

Disable the Norton AntiVirus *Auto-Protect* feature by:

1. Right-mouse click the Norton AntiVirus icon in the system tray.
2. Select **Auto-Protect** option.
3. Set the **Select the duration** option to *Until system restart*.
4. Click **OK**

Disable Norton AntiVirus Script Blocking feature by:


1. Right-mouse click the Norton AntiVirus icon in the system tray.
2. Select **Norton AntiVirus Options**.

3DVIA Composer Install Manual

3. Under **System**, click **Script Blocking**.
4. Make sure **Enable Script Blocking** option is de-selected.
5. Click **OK**.

If you are using McAfee VirusScan perform the following steps:

Disable McAfee VirusScan ScriptStopper feature by:


1. Right-mouse click the McAfee VirusScan icon in the system tray.
The McAfee system tray icon looks like .
2. Select **VirusScan** then click **Options**.
3. Click the **Advanced** button and then click the **ScriptStopper** tab.

Note: McAfee VirusScan 10 users, click the **Exploits** tab.

4. Make sure **Enable ScriptStopper (recommended)** option is de-selected.
5. Click **OK** and then click **OK** to complete disabling McAfee ScriptStopper feature.

If you are using Microsoft Antispyware perform the following steps:

Disable Microsoft Antispyware (beta) by:

1. Right-mouse click (right-click) the Microsoft Antispyware icon located in the system tray.
Microsoft Antispyware system tray icon looks like .
2. Select **Shutdown Microsoft Antispyware**.

Note: After the installation of Maximizer or Maximizer Enterprise, it may be necessary to deactivate Microsoft Antispyware Real-time Protection to allow Maximizer to operate correctly. This is done by:

1. Right-mouse click (right-click) the Microsoft Antispyware icon located in the system tray.
2. Select **Open Microsoft Antispyware**. The Microsoft Antispyware dialog box appears.
3. Click **Real-time Protection**.
4. Repeat the following steps for Internet Agents, System Agents, and Application Agents:
 - i. Click desired Agent.
 - ii. Click **Deactivate** to change the Agent's status.
 - iii. Click **Back to Real-time Protection summary**.

If you are using Webroot Spy Sweeper perform the following steps:

Disable Webroot Spy Sweeper by:

1. Right-mouse click (right-click) the Webroot Spy Sweeper icon located in the system tray.

3DVIA Composer Install Manual

2. Select **Shut Down** from the shortcut menu. Click the **Shut Down** button to confirm.

For Windows NT, Windows 2000, and Windows XP systems:

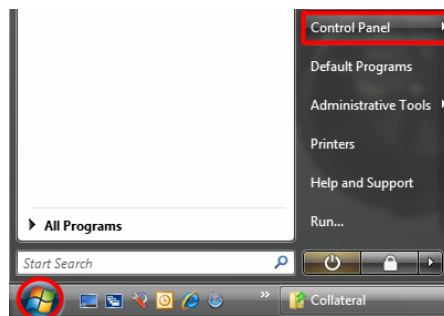
3. Next, click **Start > Settings > Control Panel**.
4. Double-click **Administrative Tools** and then double-click **Services**.
5. Find and double-click **Webroot Spy Sweeper Engine** listed under the Name column.
6. Click the **Stop** button to stop the Webroot service.
7. Click **OK** to close the **Webroot Spy Sweeper Engine** properties.

If you have an anti virus or spyware program that is not listed here please check the documentation from the creator of the program on their website.

WINDOW'S DEFENDER

In Windows Vista there is an anti-virus component called Windows Defender, we recommend turning this off as well to ensure the program loads correctly. Here are instructions on turn off this program.

1. Go to the **Control Panel**.



2. Find **Windows Defender**



3. Click the **Tools** button along the top then press the **Options** link under the settings area.



[Options](#)

Choose how you want Windows Defender to run

4. Deselect the **Use Windows Defender** option under the Administrator Options.

Administrator options

Use Windows Defender

When Windows Defender is on, all users are alerted if spyware or other potentially unwanted software attempts to run or install itself on the computer. Windows Defender will check for new definitions, regularly scan the computer, and automatically remove harmful software detected by a scan.

